

Mortality in patients after acute myocardial infarction managed by cardiologists and primary care physicians: a systematic review

Jan W. Pęksa¹, Dawid Storman^{2,3}, Piotr Jankowski¹, Wojciech Staśkiewicz⁴,
Katarzyna W. Jasińska⁴, Danuta Czarnecka¹, Małgorzata M. Bała⁵

1 Department of Cardiology, Interventional Electrophysiology and Hypertension, Institute of Cardiology, Jagiellonian University Medical College, Kraków, Poland

2 Systematic Reviews Unit, Department of Hygiene and Dietetics, Jagiellonian University Medical College, Kraków, Poland

3 Department of Adult Psychiatry, University Hospital, Kraków, Poland

4 Students' Scientific Group of Systematic Reviews, Systematic Reviews Unit–Polish Cochrane Branch, Jagiellonian University Medical College, Kraków, Poland

5 Chair of Epidemiology and Preventive Medicine, Department of Hygiene and Dietetics, Jagiellonian University Medical College, Kraków, Poland

KEY WORDS

cardiologist, coronary artery disease, general practitioner, mortality, myocardial infarction

ABSTRACT

INTRODUCTION Mortality following acute myocardial infarction (AMI) remains high despite of progress in invasive and noninvasive treatments.

OBJECTIVES This study aimed to compare the outcomes of ambulatory treatment provided by cardiologists versus general practitioners (GPs) in post-AMI patients.

PATIENTS AND METHODS We conducted a systematic search in 3 electronic databases for interventional and observational studies that reported all-cause mortality, mortality from cardiovascular causes, stroke, and myocardial infarction at long-term follow-up following AMI. We assessed the risk of bias of the included studies using the Risk of Bias in Nonrandomized Studies of Interventions (ROBINS-I) tool. For randomized trials, we used the revised Cochrane risk of bias tool (RoB 2.0).

RESULTS Two nonrandomized studies fulfilled the inclusion criteria. We assessed these studies as having a moderate risk of bias. We did not pool the results owing to significant heterogeneity between the studies. Patients consulted by both a cardiologist and a GP were at lower risk of all-cause death as compared with patients consulted by a cardiologist only (risk ratio [RR], 0.92; 95% CI, 0.85–0.99). Patients consulted by a cardiologist with or without GP consultation were at lower risk of all-cause death compared with those consulted by a GP only in both studies (RR, 0.8; 95% CI, 0.75–0.85 and RR, 0.44; 95% CI, 0.41–0.47).

CONCLUSIONS Patients after AMI consulted by both a cardiologist and a GP may be at lower risk of death compared with patients consulted by a GP or a cardiologist only. However, these findings are based on moderate-quality nonrandomized studies. We found no evidence on the relation between the specialization of the physician and the risk of cardiovascular death, stroke, or myocardial infarction in AMI survivors.

Correspondence to:

Jan W. Pęksa, MD, Department of Cardiology, Interventional Electrophysiology and Hypertension, Institute of Cardiology, Jagiellonian University Medical College, ul. Jakubowskiego 2, 30-688 Kraków, Poland, phone: +48 12 400 61 21, email: janwpeksa@gmail.com

Received: May 22, 2020.

Revision accepted: August 3, 2020.

Published online: August 4, 2020.

Pol Arch Intern Med. 2020;

130 (10): 860–867

doi:10.20452/pamw.15542

Copyright by the Author(s), 2020

INTRODUCTION The management of patients with acute myocardial infarction (AMI) has changed significantly over the last few decades, also in the areas of reperfusion therapy and pharmacological treatment. This has led to a significant reduction in both short- and long-term mortality in most countries.^{1–9} However, post-discharge mortality rates remain high. In Norway, for example, the 1-year mortality rate in patients who survive the first 28 days after an AMI event

exceeds 10%.⁵ Researchers have identified several system- and patient-related factors associated with an increased cardiovascular risk following a patient's discharge from the hospital. These include insufficient risk factor control, insufficient and delayed cardiac rehabilitation, suboptimal pharmacotherapy, delayed complete myocardial revascularization, and comorbidities.^{4,10} However, the absence of cardiac consultations during the postdischarge period is among the key

WHAT'S NEW?

Our systematic search showed that patients after acute myocardial infarction consulted by both a cardiologist and a general practitioner may be at lower risk of death compared with patients consulted by a general practitioner or a cardiologist only. Of note, these findings are based on moderate-quality nonrandomized studies. In this study, we found no evidence on the relation between the specialty of the physician and the risk of cardiovascular death, stroke, or myocardial infarction in acute myocardial infarction survivors.

factors for increased risk. For example, referring a patient with systolic heart failure (often after AMI) after discharge to a cardiologist is associated with a 19% reduction in 1-year all-cause mortality (odds ratio [OR], 0.81; 95% CI, 0.68–0.95).¹¹

The evidence regarding mortality rates in patients after AMI suggests that those treated by cardiologists during hospitalization are at lower mortality risk than patients treated by internists or general practitioners (GPs).^{12,13} In addition, data from the United States have shown that patients hospitalized for AMI and heart failure in areas with a low density of cardiologists were at a slightly higher 30-day and 1-year mortality risk.¹⁴ As a consequence, we undertook a systematic review of studies comparing morbidity and mortality in post-AMI patients treated by cardiologists or primary care physicians following patients' discharge from the hospital.

METHODS We performed an electronic search of the MEDLINE, EMBASE, and the Cochrane Central Register of Controlled Trials database from its inception to July 4, 2019, based on a search strategy specifically developed for this study. We used both subject headings (MeSH and Emtree) and free text search terms. The following keywords were entered: “cardiologist” with synonyms, “general practitioner” with synonyms and “Myocardial Infarction” with synonyms (for the search strategy, see Supplementary material, *Appendix S1*). We did not apply any restrictions in terms of publication date or language. Our full search strategy was published online together with the study protocol in the PROSPERO database.¹⁵ We manually searched for references of the included studies, relevant review articles, and meta-analyses for any potentially overlooked studies.

We included experimental, quasi-experimental, and observational studies, all of which were published as full-text articles that evaluated all-cause mortality and cardiovascular outcomes in post-AMI adult subjects (over 18 years of age) following their discharge from the hospital. To be included in the review, these studies had to analyze patients treated by specialists in cardiology (or physicians undergoing training in cardiology) or by physicians working in primary care (family physicians or general internists), separately. Studies that did not exclude patients with stable coronary artery disease (CAD) were included if they provided information about the subgroups

of post-AMI patients and patients with stable CAD, separately. If the outcomes of a study group were reported in more than one publication, we selected and included in our present analysis the publication that reported the longest follow-up. If a study was reported in 2 separate articles, we selected and included in the present review the article that analyzed the largest population. Our analysis encompassed a long time-frame (at least 30 days after AMI).

After performing 2 calibration exercises, we screened titles and abstracts in 2 pairs (JP + KJ and DS + WS) using the Rayyan QCRI application.¹⁶ We followed a similar procedure for full-text screening: after 2 calibration exercises, the first author of this study (JP) looked through all the texts in pairs with other researchers (DS, KJ, and WS). All the reviewers (JP, DS, KJ, and WS) independently collected data from primary studies, whereas 2 researchers (JP and DS) evaluated bias using the Risk of Bias in Nonrandomized Studies of Interventions (ROBINS-I) tool. The collected data comprised, among others, the names of the authors, the year and country of publication, the study purpose, elements of the PICO strategy, conflicts of interest, and funding. We resolved any discrepancies by consensus among the authors at every stage. In the case of missing data, we contacted the authors of the analyzed study by email. We illustrated the study flow at the subsequent stages of the review by means of the Preferred Reporting Items for Systematic Reviews and Meta-Analyses (PRISMA) diagram.^{17,18}

Regarding follow-up, we looked at all-cause mortality, mortality from cardiovascular causes, stroke, and AMI. For the purposes of the present analysis, AMI was defined according to the definition adopted by the authors of each particular study. Similarly, the definition of stroke depended on the concepts used in the analyzed studies. A GP meant a physician working in primary care and included family physicians and internists. We defined a cardiologist as a specialist in cardiology or a physician undergoing specialist training in cardiology.

We assessed the risk of bias in the studies based on validated tools (the revised Cochrane risk of bias tool [RoB 2.0] for randomized controlled trials and the ROBINS-I tool for nonrandomized controlled trials).^{19,20} This information was incorporated and discussed within the framework of qualitative data synthesis and is presented in **TABLE 1**.

Statistical analysis In the case of nonrandomized studies, data concerning the matched groups of patients were analyzed with the aim to reduce the impact of any differences in group characteristics on the effect of the studied intervention. According to the protocol, random-effects summary risk ratios on the basis of the DerSimonian and Laird model using 95% CIs as the measure of effect were used when expected heterogeneity

TABLE 1 Risk of bias of the analyzed studies assessed with the ROBINS-I tool

Author, year, study design	Bias due to confounding	Bias in the selection of participants into the study	Bias in the classification of interventions	Bias due to departures from the intended interventions	Bias due to missing data	Bias in the measurement of outcomes	Bias in the selection of the reported results	Overall bias
Ayanian et al. ²⁷ 2002; Landrum et al. ²⁶ 2001, RC	Moderate risk ^a	Low risk	Moderate risk ^b	Low risk	No information ^c	Low risk	No information ^d	Moderate risk
Radzimanowski et al. ²⁸ 2018, RC	Moderate risk ^a	Low risk	Moderate risk ^b	Low risk	No information ^c	Low risk	No information ^d	Moderate risk

a Confounding expected, important confounding domains measured and controlled (propensity score matching of patients used)

b It was clearly defined how patients were classified to one of the intervention groups (ie, ≥ 1 visit to a cardiologist, a GP or an internist in a specified period of time), and the classification was based on medical records. The extent of the intervention was not clearly specified (eg, there were no details provided such as the duration of visits performed and what elements they contained connected with the assessed outcome). No information was provided on the impact of the knowledge of the outcome risk on the intervention status classification.

c No information about the number of excluded patients owing to missing data in matched groups; data for unmatched patients only

d No clear evidence (preregistered protocol or statistical analysis plan) that all reported results correspond to all intended outcomes, analyses, and subcohorts

Abbreviations: GP, general practitioner; RC, retrospective cohort

between the studies was significantly high. Statistical heterogeneity was measured using the I^2 statistics.²¹⁻²³ A P value less than 0.05 was considered significant. All the analyses were performed using the Review Manager 5.3 software.²⁴ We performed meta-analyses for each pair of treatment (cardiologist vs GP care) for each outcome (cardiovascular outcomes and all-cause mortality). The goal was to investigate any substantial heterogeneity between studies.

RESULTS A total of 4 articles²⁵⁻²⁸ met the inclusion criteria. A study by Gerlach et al²⁵ was presented only as an abstract and had to be excluded from further analysis owing to lack of sufficient details. Two articles covered the same population within the framework of the Cooperative Cardiovascular Project, and a single paper²⁶ was a substudy of another study,²⁷ which was confirmed by the authors. As a consequence, we excluded a single substudy and included 2 studies in the final analysis: by Ayanian et al²⁷ and Radzimanowski et al²⁸ (FIGURE 1). We decided not to pool the data because of considerable heterogeneity between the studies ($I^2 = 99\%$), which was probably due to the significant gap between the periods of data collection (16 to 17 years), various methods used to treat patients after AMI during these time periods, and different health-care systems. We did not find any study analyzing the risk of cardiovascular death, stroke, or myocardial infarction in patients who had a cardiac consultation during the postdischarge period compared with patients who did not have such consultation.

Both studies in our review were observational and included a retrospective cohort. The follow-up period was 1.5 years in the study conducted by Ayanian et al²⁷ and 2 years in the study by Radzimanowski et al.²⁸ The total number of patients treated by a cardiologist in the matched groups from both studies was 30 236. The mean age of patients was 69.8 years. The total number of patients from both groups that received no care from a cardiologist was also 30 236. Those patients were at a mean age of 69.8 years. The study populations constituting both groups were primarily of male sex. In the study by Ayanian et al,²⁷ propensity-score matching based on sociodemographic and clinical variables was performed using the logistic regression model as a function of 36 variables that predicted whether a patient would visit a cardiologist. In the study by Radzimanowski et al,²⁸ the matching method was similar, and the overall number of sociodemographic and clinical variables was 26. According to Ayanian et al,²⁷ the most commonly reported conditions before admission were hypertension, angina, and diabetes. In the second study,²⁸ the most frequent complications included a history of chronic ischemic heart disease, hypertension, and dyslipidemia.

Research elements included in the analysis according to the PICO list and the baseline characteristics of the matched groups of patients are

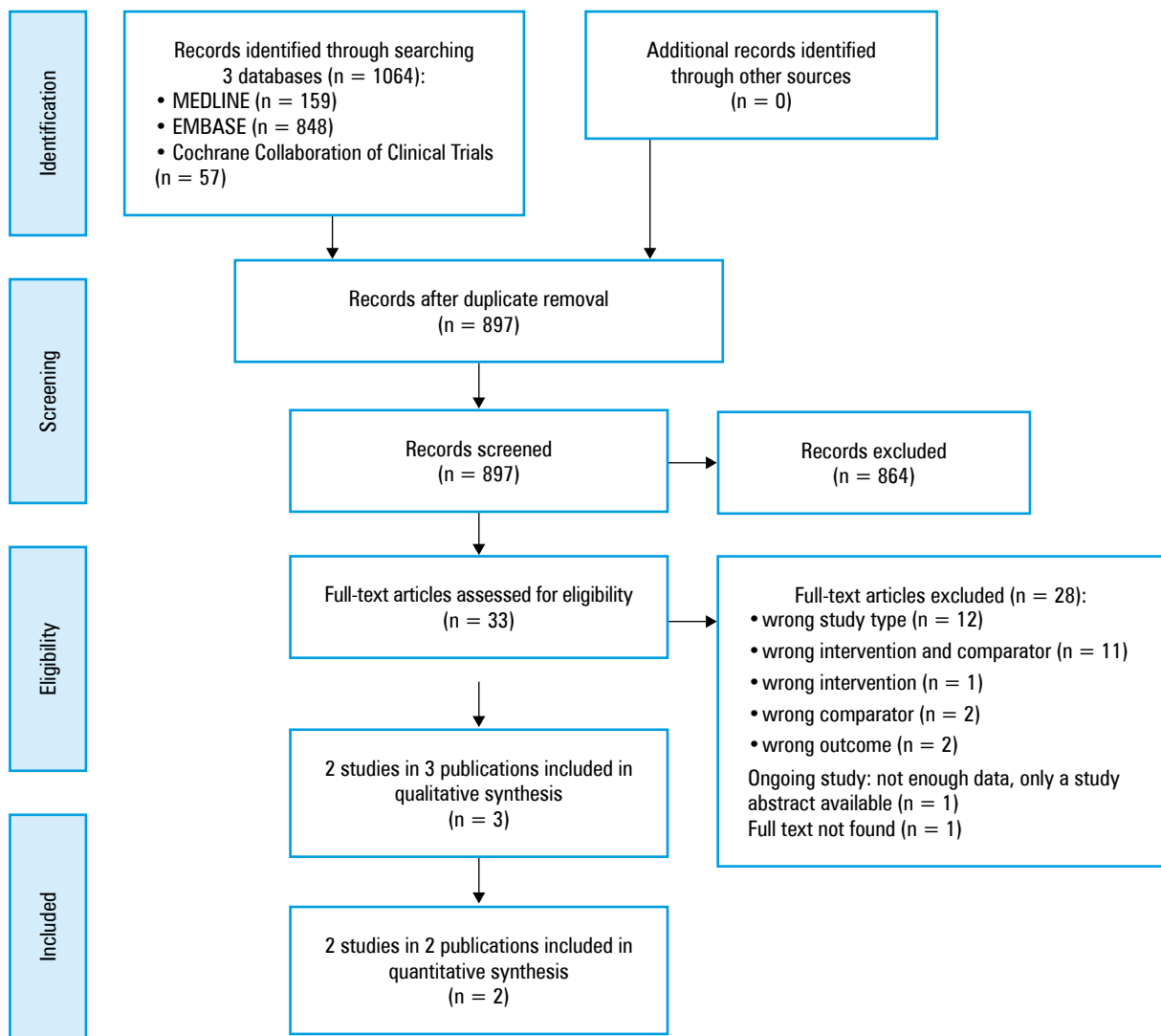


FIGURE 1 Summary of how the systematic search was conducted and eligible studies were identified (the PRISMA flow diagram)

shown in **TABLE 2**. The studies were assessed as having a moderate risk of bias (**TABLE 1**).

The available data allowed for 3 comparisons: 1) patients treated by cardiologists with or without GP consultation versus those treated by GPs only; 2) patients treated only by cardiologists versus those treated only by GPs; and 3) patients treated by both a cardiologist and a GP versus those treated by cardiologists only (**FIGURES 2 and 3**). The first comparison included data from both studies and showed a significantly lower risk of death in patients treated by cardiologists with or without care provided by GPs compared with those treated only by GPs. The second comparison could be based on a single study and showed no significant difference between the groups. The third comparison was also based on the results of a single study and showed a significantly lower risk of death when patients were treated by both a cardiologist and a GP as opposed to those treated only by a cardiologist.

DISCUSSION The results of this systematic review showed that patients after AMI who received

ambulatory care from both a cardiologist and a GP may have better long-term outcomes than those treated only by a GP. To the best of our knowledge, our systematic review is the first attempt to summarize the evidence on this topic. There are several reasons that could contribute to a better prognosis in post-AMI patients treated in outpatient clinics by cardiologists in cooperation with GPs compared with GPs only. Perhaps, the former group has easier access to cardioprotective drugs in effective doses, cardiac rehabilitation, diagnostic workup, and some procedures, eg, repeat revascularizations.

The previously published systematic review described the relationship between a physician's specialty and the mortality of patients after AMI.¹² However, the authors of this survey considered only the specialization of physicians who treated patients in the hospital. It covered 11 studies. The unadjusted mortality rates were lower in patients treated in the acute phase by cardiologists compared with those treated by physicians with other specializations (eg, family physicians). After adjusting for baseline imbalances,

TABLE 2 Systematic comparison of the analyzed studies

Author, year, country, data source	Design, duration, overall sample size	Selected characteristics of the study patients	Inclusion criteria	Exclusion criteria	Intervention in the primary analysis	Comparator in the primary analysis	Primary outcome measured	Funding/Col
Ayanian et al, ²⁷ 2002, United States, CCP (Landrum et al, ²⁶ 2001, United States, CCP—a substudy including a smaller population)	RC, 1994–1995, 35 520 patients	The total study group treated by cardiologists included 24 656 patients. The total group treated by GPs only included 10 864 patients. Groups of patients matched by PSMs (comparison 1): • Treated by cardiologists with or without GP consultations (n = 10 199): mean age, 74.1 yrs, 51.9% men, 65.8% of patients with hypertension, 33.7% with diabetes, 23.6% with IM, 53.1% with angina • Treated by GPs only (n = 10 199): mean age, 74.2 yrs, 52% men, 64.6% of patients with hypertension, 33.5% with diabetes, 23.4% with IM, 52.7% with angina Groups of patients matched by PSMs (comparison 2): • Treated by cardiologists and GPs (n = 10 415): mean age, 73.2 yrs, 61.4% men, 60.9% of patients with hypertension, 25.9% with diabetes • Treated by cardiologists only (n = 10 415): mean age, 73.2 yrs, 61.6% men, 60.6% of patients with hypertension, 25.4% with diabetes	Patients who were discharged in the United States with a principal diagnosis of AMI, at least 65 yrs with fee-for-service Medicare coverage.	<ul style="list-style-type: none"> • Death within 3 months after discharge • Metastatic cancer or a do-not-resuscitate order • Enrolment in a health maintenance organization within 3 months after discharge • Residence in a nursing home • No Medicare Part B coverage for physicians' care • Patients without at least 1 ambulatory visit to a cardiologist, an FP, or an internist within 3 months after discharge 	Patients who had at least 1 office visit with a cardiologist during the 3 months after discharge (with or without a visit to an internist or an FP).	Patients who had at least 1 visit with a GP (an internist or an FP) but no visit with a cardiologist during the 3 months after discharge.	2-year all-cause mortality after discharge	Yes/NR
Radzimanowski et al, ²⁸ 2018, Germany, NA of SHI	RC, 2011, 158 494 patients	The total group treated by cardiologists included 81 030 patients. The total group treated by GPs only included 77 464 patients. Groups of patients matched by PSMs (comparison 1): • Treated by cardiologists with or without GP consultations (n = 20 037): mean age, 67.6 yrs, 65.6% men, 88% of patients with hypertension, 39.5% with diabetes, 17.8% with angina, 90.8% with CIHD • Treated by GPs only (n = 20 037): mean age, 67.6 yrs, 65.7% men, 88.2% of patients with hypertension, 39.3% with diabetes, 18% with angina, 91.3% with CIHD Groups of patients matched by PSMs (comparison 2): • Treated by cardiologists only (n = 982) • Treated by GPs only (n = 982)	Patients who were newly diagnosed with AMI, coded as "confirmed" or "status post" by an ambulatory physician.	<ul style="list-style-type: none"> • No ambulatory contact in the years 2009 to 2010 • Without ambulatory contact with a GP, an internist, or a cardiologist within the first year after the diagnosis of AMI • No information about the type of district, sex, and age 	Patients who were consulted by an ambulatory cardiologist at least once within the first year after discharge	Patients without ambulatory cardiology care within the first year after discharge	18-month all-cause mortality	No/no

Abbreviations: AMI, acute myocardial infarction; CCP, Cooperative Cardiovascular Project; CIHD, chronic ischemic heart disease; Col, conflict of interest; FP, family practitioner; IM, impaired mobility; NA of SHI, National Association of Statutory Health Insurance; NR, not reported; PSMs, propensity score matching methods; others, see TABLE 1

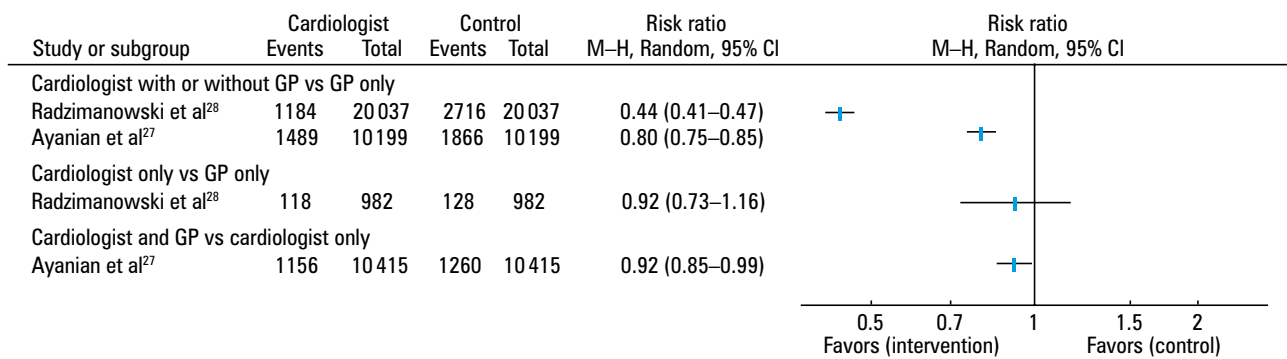


FIGURE 2 Risk ratios of all-cause mortality for the comparison of patients treated by cardiologists with or without general practitioner consultations versus treated by general practitioners only, the comparison of patients treated by cardiologists only versus treated by general practitioners only, and the comparison of patients treated by cardiologists and general practitioners versus treated by cardiologists only
Abbreviations: M-H, Mantel-Haenszel method; others, see [TABLE 1](#)

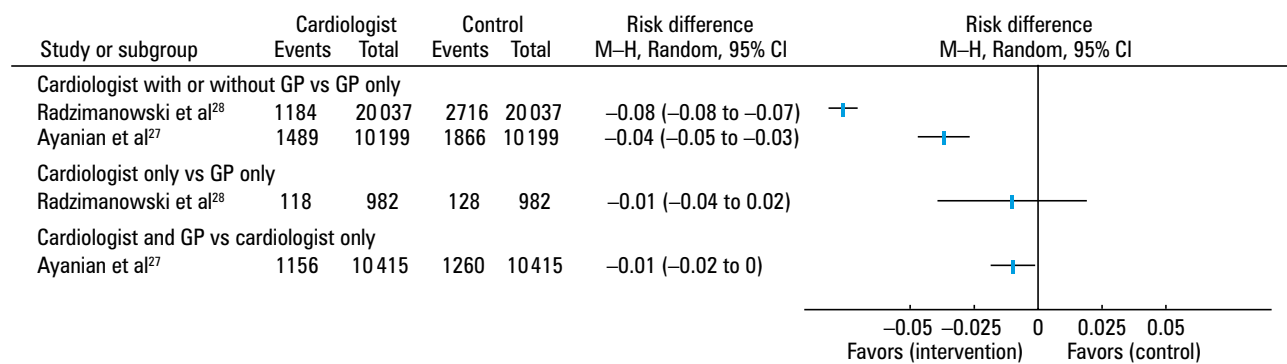


FIGURE 3 Risk difference of all-cause mortality for the comparison of patients treated by cardiologists with or without general practitioner consultations versus treated by general practitioners only, the comparison of patients treated by cardiologists only versus treated by general practitioners only, and the comparison of patients treated by cardiologists and general practitioners versus treated by cardiologists only
Abbreviations: see [FIGURE 2](#) and [TABLE 1](#)

the differences were often very small. The multi-variable odds ratios for in-hospital and 30-day mortality rates in patients treated by cardiologists versus those treated by GPs ranged from 0.95 to 1.29,^{29,30} while 1-year mortality rates ranged from 0.99 to 1.3.^{31,32} As for the lower mortality of patients after AMI treated by cardiologists, this could be due to the fact that cardiologists are more specialized than GPs in managing patients after myocardial infarction, which could lead to more frequent and adequate prescription of medications improving survival, as well as more frequent referral to cardiac rehabilitation and invasive cardiology centers.³³ Considering that access to typical AMI treatment (both percutaneous coronary intervention and medical therapy) is nowadays granted, the effect of physician specialty may be lower.

Hartz et al¹² underlined the fact that no studies adequately accounted for reasons why a cardiologist did not treat patients who had sustained myocardial infarction. These reasons might include, for example, patient preferences, aggravation of comorbidities, general health status, or resource availability.¹² Moreover, results comparing patient outcomes by treating physician's

specialty are often influenced by relevant patient or resource characteristics, which were not taken into account.¹²

The European Society of Cardiology currently emphasizes that low-risk patients after AMI can be safely discharged from the hospital 2 or 3 days after an effective primary percutaneous coronary intervention.³⁴⁻³⁶ A short hospital stay means less time to ensure that the patient is provided with the right information and receives optimal pharmacological treatment. It is therefore becoming increasingly important that a patient consults a cardiologist shortly after hospital discharge and participates in a formal rehabilitation program. Recently, some countries have introduced managed care programs aimed at improving access to cardiologist care following hospitalization for AMI.^{37,38} For example, in Poland, the National Health Fund (Narodowy Fundusz Zdrowia) requires patients to have at least 3 consultations with a cardiologist within the first 12 months following AMI, with the first consultation within the first 6 weeks.^{37,39} Managed care programs following myocardial infarction are highly graded by patients.⁴⁰

In our view, further research should focus on describing the impact of the medical specialty

on the mortality of patients after AMI, especially from the perspective of providing more effectively defined interventions (number and duration of visits in a given period of time).

Limitations The present systematic review had several limitations. First, the studies were observational and nonrandomized. No single double-blinded study fulfilled the inclusion criteria. Second, only 2 studies were included in the review. Despite extensive database search, we found only these studies and this may result in publication bias. It is important to note that one of these studies contained the data of patients hospitalized from 1994 to 1995, whereas the other study included a considerable amount of recent data. Therefore, their results may not reflect the current practice.^{27,28} Over the years, the treatment of patients with AMI both during hospitalization and in the postdischarge period has significantly changed. Invasive treatment in the acute phase of AMI has spread, thrombolysis has become less common, numerous new drugs have been introduced in routine clinical practice, eg, clopidogrel, ticagrelor, statins, and renin-angiotensin-aldosterone system inhibitors. This could have caused significant heterogeneity between the studies we have found. Finally, the fact that the first study was performed in the United States and the other in Germany is also a limitation, as these countries have diverse health and healthcare professional education systems, which results in discrepancies in competencies and referral for procedures.^{41,42}

Conclusions This systematic review suggested that patients after AMI who were consulted by both a cardiologist and a GP may be at lower risk of death compared with those consulted by a GP or a cardiologist alone, although we found no high-quality, up-to-date analyses in this field. We found no evidence regarding the relationship between the specialization of a physician and the risk of patients' cardiovascular death, stroke, or myocardial infarction in AMI survivors. There is an urgent need for new, properly reported research in this area. These studies should focus not only on all-cause mortality, but also on recurrent AMI, stroke, and cardiovascular mortality.

SUPPLEMENTARY MATERIAL

Supplementary material is available at www.mp.pl/paim.

ARTICLE INFORMATION

ACKNOWLEDGMENTS The publication of this article was funded by the Priority Research Area qLife under the program "Excellence Initiative—Research University" at the Jagiellonian University in Kraków, Poland (application no., 06/IDUB/2019/94; to JWP). We would like to thank Prof. John Z. Ayanian and Prof. Mary B. Landrum for answering our questions about the population in their publications and Dr Martina Gerlach for answering our questions about the details of her publication. We also thank Dr Michael Gerlach for his help in contacting the author of one of the analyzed articles.

CONTRIBUTION STATEMENT PJ, DC, and MB contributed to the conception of the work. JWP, DS, WS, and KJ performed search and extracted data. JWP, PJ, DS, and MB conducted statistical analyses. JWP, PJ, DS,

and MB drafted the manuscript and contributed to data acquisition, analysis, and interpretation. DC critically revised the manuscript and contributed to data interpretation. All authors provided the final approval and agreed to be accountable for all aspects of the work ensuring its integrity and accuracy.

CONFLICT OF INTEREST None declared.

OPEN ACCESS This is an Open Access article distributed under the terms of the Creative Commons Attribution-NonCommercial-ShareAlike 4.0 International License (CC BY-NC-SA 4.0), allowing third parties to copy and redistribute the material in any medium or format and to remix, transform, and build upon the material, provided the original work is properly cited, distributed under the same license, and used for noncommercial purposes only. For commercial use, please contact the journal office at pamw@mp.pl.

HOW TO CITE Pęksa JW, Storman D, Jankowski P, et al. Mortality in patients after acute myocardial infarction managed by cardiologists and primary care physicians: a systematic review. *Pol Arch Intern Med.* 2020; 130: 860-867. doi:10.20452/pamw.15542

REFERENCES

- 1 Jernberg T, Johanson P, Held C, et al. Association between adoption of evidence-based treatment and survival for patients with ST-elevation myocardial infarction. *JAMA.* 2011; 305: 1677-1684. [↗](#)
- 2 Puymirat E, Aissaoui N, Cayla G, et al. Changes in one-year mortality in elderly patients admitted with acute myocardial infarction in relation with early management. *Am J Med.* 2017; 130: 555-563. [↗](#)
- 3 Gasior M, Gierlotka M, Pyka Ł, et al. Temporal trends in secondary prevention in myocardial infarction patients discharged with left ventricular systolic dysfunction in Poland. *Eur J Prev Cardiol.* 2018; 25: 960-969. [↗](#)
- 4 Jankowski P, Czarnecka D, Badacz L, et al. Practice setting and secondary prevention of coronary artery disease. *Arch Med Sci.* 2018; 14: 979-987. [↗](#)
- 5 Sulo G, Iglund J, Sulo E, et al. Mortality following first-time hospitalization with acute myocardial infarction in Norway, 2001–2014: time trends, underlying causes and place of death. *Int J Cardiol.* 2019; 294: 6-12. [↗](#)
- 6 Johansson S, Rosengren A, Young K, Jennings E. Mortality and morbidity trends after the first year in survivors of acute myocardial infarction: a systematic review. *BMC Cardiovasc Disord.* 2017; 17: 53. [↗](#)
- 7 Radisauskas R, Kirvaitiene J, Bernotiene G, et al. Long-term survival after acute myocardial infarction in Lithuania during transitional period (1996–2015): data from population-based Kaunas ischemic heart disease register. *Medicina.* 2019; 55: 357. [↗](#)
- 8 Snelder SM, Nauta ST, Akkerhuis KM, et al. Weekend versus weekday mortality in ST-segment elevation acute myocardial infarction patients between. Weekend versus weekday mortality in ST-segment elevation acute myocardial infarction patients between 1985 and 2008. *Int J Cardiol.* 2013; 168: 1576-1577. [↗](#)
- 9 Viana-Tejedor A, Loughlin G, Fernandez-Aviles F, Bueno H. Temporal trends in the use of reperfusion therapy and outcomes in elderly patients with first ST elevation myocardial infarction. *Eur Heart J Acute Cardiovasc Care.* 2015; 4: 461-467. [↗](#)
- 10 Piepoli MF, Hoes AW, Agewall S, et al. 2016 European guidelines on cardiovascular disease prevention in clinical practice: the Sixth Joint Task Force of the European Society of Cardiology and Other Societies on Cardiovascular Disease Prevention in Clinical Practice (constituted by representatives of 10 societies and by invited experts). Developed with the special contribution of the European Association for Cardiovascular Prevention & Rehabilitation (EACPR). *Eur Heart J.* 2016; 37: 2315-2381.
- 11 Emdin CA, Hsiao AJ, Kiran A, et al. Referral for specialist follow-up and its association with post-discharge mortality among patients with systolic heart failure (from the National Heart Failure Audit for England and Wales). *Am J Cardiol.* 2017; 119: 440-444. [↗](#)
- 12 Hartz A, James PA. A systematic review of studies comparing myocardial infarction mortality for generalists and specialists: lessons for research and health policy. *J Am Board Fam Med.* 2006; 19: 291-302. [↗](#)
- 13 Ellerbeck EF, Jencks SF, Radford MJ, et al. Quality of care for Medicare patients with acute myocardial infarction. A 4-state pilot study from the Cooperative Cardiovascular Project. *JAMA.* 1995; 273: 1509-1514. [↗](#)
- 14 Kulkarni VT, Ross JS, Wang Y, et al. Regional density of cardiologists and rates of mortality for acute myocardial infarction and heart failure. *Circ Cardiovasc Qual Outcome.* 2013; 6: 352-359. [↗](#)
- 15 Pęksa J, Jankowski P, Storman D, et al. Systematic review and meta-analysis of studies comparing cardiovascular risk in patients after acute myocardial infarction managed by cardiologists and primary care physicians. https://www.cr.d.york.ac.uk/prospero/display_record.php?RecordID=124167. Accessed August 3, 2020. [↗](#)
- 16 Ouzzani M, Hammady H, Fedorowicz Z, Elmagarmid A. Rayyan – a web and mobile app for systematic reviews. *Systematic Reviews.* 2016; 5: 210. [↗](#)
- 17 Moher D, Liberati A, Tetzlaff J, Altman DG; The PRISMA Group (2009). Preferred Reporting Items for Systematic Reviews and Meta-Analyses: the PRISMA statement. *PLoS Med.* 2009; 6:e1000097.
- 18 CCDAN PRISMA Study Flow Diagram Advice. <https://cmd.cochrane.org/sites/cmd.cochrane.org/files/public/uploads/PRISMA%20diagram%20v2.pdf>. Accessed August 3, 2020.

- 19 Current version of RoB 2. Risk of bias tools. <https://www.riskofbias.info/welcome/rob-2-0-tool/current-version-of-rob-2>. Accessed August 3, 2020.
- 20 Current version of ROBINS-I. Risk of bias tools. <https://www.riskofbias.info/welcome/home/current-version-of-robins-i>. Accessed August 3, 2020.
- 21 DerSimonian R, Laird N. Meta-analysis in clinical trials. *Control Clin Trials*. 1986; 7: 177-188. [↗](#)
- 22 Kelley GA, Kelley KS. Statistical models for meta-analysis: a brief tutorial. *World J Methodol*. 2012; 2: 27-32. [↗](#)
- 23 Higgins JP, Thompson SG, Deeks JJ, Altman DG. Measuring inconsistency in meta-analyses. *BMJ*. 2003; 327: 557-560. [↗](#)
- 24 Review Manager (RevMan). Version 5.3. Copenhagen: The Nordic Cochrane Centre, The Cochrane Collaboration, 2014.
- 25 Gerlach M, Haacke K, Jerzak P, et al. After myocardial infarction – is patients treatment by the cardiologist better than by the general practitioner? *Eur Heart J*. 2012; 33 (suppl 1): 440.
- 26 Landrum MB, Ayanian JZ. Causal effect of ambulatory specialty care on mortality following myocardial infarction: a comparison of propensity score and instrumental variable analyses. *Health Serv Outcomes Res Methodol*. 2001; 2: 221-245. [↗](#)
- 27 Ayanian JZ, Landrum MB, Guadagnoli E, Gaccione P. Specialty of ambulatory care physicians and mortality among elderly patients after myocardial infarction. *N Engl J Med*. 2002; 347: 1678-1686. [↗](#)
- 28 Radzimanowski M, Gallowitz C, Müller-Nordhorn J, et al. Physician specialty and long-term survival after myocardial infarction – a study including all German statutory health insured patients. *Int J Cardiol*. 2018; 251: 1-7. [↗](#)
- 29 Nash IS, Corrado RR, Dlutowski MJ, et al. Generalist versus specialist care for acute myocardial infarction. *Am J Cardiol*. 1999; 83: 650-654. [↗](#)
- 30 Nash IS, Nash DB, Fuster V. Do cardiologists do it better? *J Am Coll Cardiol*. 1997; 29: 475-478. [↗](#)
- 31 Ayanian JZ, Guadagnoli E, McNeil BJ, Cleary PD. Treatment and outcomes of acute myocardial infarction among patients of cardiologists and generalist physicians. *Arch Intern Med*. 1997; 157: 2570-2576. [↗](#)
- 32 Frances CD, Go AS, Dauterman KW, et al. Outcome following acute myocardial infarction: are differences among physician specialties the result of quality of care or case mix? *Arch Intern Med*. 1999; 159: 1429-1436. [↗](#)
- 33 Abubakar I, Kanka D, Arch B, et al. Outcome after acute myocardial infarction: a comparison of patients seen by cardiologists and general physicians. *BMC Cardiovasc Disord*. 2004; 4: 14. [↗](#)
- 34 Ibanez B, James S, Agewall S, et al. 2017 ESC Guidelines for the management of acute myocardial infarction in patients presenting with ST-segment elevation: the Task Force for the management of acute myocardial infarction in patients presenting with ST-segment elevation of the European Society of Cardiology (ESC). *Eur Heart J*. 2018; 39: 119-177.
- 35 Melberg T, Jørgensen M, Ørn S, et al. Safety and health status following early discharge in patients with acute myocardial infarction treated with primary PCI: a randomized trial. *Eur J Prev Cardiol*. 2015; 22: 1427-1434. [↗](#)
- 36 Jones DA, Rathod KS, Howard JP, et al. Safety and feasibility of hospital discharge 2 days following primary percutaneous intervention for ST-segment elevation myocardial infarction. *Heart*. 2012; 98: 1722-1727. [↗](#)
- 37 Jankowski P, Gąsior M, Gierlotka M, et al. Coordinated care after myocardial infarction. The statement of the Polish Cardiac Society and the Agency for Health Technology Assessment and Tariff System. *Kardiologia Pol*. 2016; 74: 800-811. [↗](#)
- 38 Wita K, Wilkosz K, Wita M, et al. Managed Care After Acute Myocardial Infarction (MC-AMI) – a Poland’s nationwide program of comprehensive post-MI care - improves prognosis in 12-month follow-up. Preliminary experience from a single high-volume center. *Int J Cardiol*. 2019; 296: 8-14. [↗](#)
- 39 Ordinance No. 38/2017/DSOZ of the President of National Health Fund of 29 May 2017 on defining the conditions for concluding and performing contracts such as hospital services. <https://www.nfz.gov.pl/zarzadzenia-prezesa/zarzadzenia-prezesa-nfz/zarzadzenie-nr-382017dsoz,6578.html>. Accessed June 20, 2020.
- 40 Feusette K, Gierlotka M, Krajewska-Redelbach I, et al. Comprehensive coordinated care after myocardial infarction (KOS-Zawał): a patient’s perspective. *Kardiologia Pol*. 2019; 77: 568-570. [↗](#)
- 41 Ridic G, Gleason S, Ridic O. Comparisons of health care systems in the United States, Germany and Canada. *Mater Sociomed*. 2012; 24: 112-120. [↗](#)
- 42 Braunwald E. The treatment of acute myocardial infarction: the Past, the Present, and the Future. *Eur Heart J Acute Cardiovasc Care*. 2012; 1: 9-12. [↗](#)