

Tumour-Derived Microvesicles (TMV) Mimic the Effect of Tumour Cells on Monocyte Subpopulations

MONIKA BAJ-KRZYWORZEKA, JAROSLAW BARAN, KAZIMIERZ WEGLARCZYK, RAFAL SZATANEK, ANNA SZAFIARSKA, MACIEJ SIEDLAR and MAREK ZEMBALA

Department of Clinical Immunology, Polish-American Institute of Paediatrics, Jagiellonian University Medical College, Cracow, Poland

Abstract. *Background: Monocytes/macrophages may be affected by tumour cells via cell-to-cell contact, soluble factors and by tumour-derived microvesicles (TMV). Previous observations indicate that TMV interact with monocytes and alter their immunophenotype and activity. This study was designed to determine interactions of TMV with subpopulations (CD14⁺⁺CD16⁻ and CD14⁺CD16⁺⁺) of human monocytes. Methods: Engulfment of TMV by subsets of monocytes was analysed by flow cytometry. Moreover cytokine release and production of reactive oxygen intermediates (ROI) and reactive nitrogen intermediates (RNI) by CD14⁺⁺CD16⁻ and CD14⁺CD16⁺⁺ cells after TMV stimulation was determined. Results: It was found that TMV are engulfed more efficiently by CD14⁺⁺CD16⁻ than CD14⁺CD16⁺⁺ cells. TMV-activated CD14⁺⁺CD16⁻ cells produce more ROI and interleukin -10 (IL-10) than CD14⁺⁺CD16⁺. CD14⁺CD16⁺⁺ cells following TMV stimulation showed an increased release of tumour necrosis factor alpha, IL-12p40 and RNI. Conclusion: TMV significantly modulate biological activity of monocyte subsets with a pattern similar to tumour cells. Therefore, TMV mimic the activating effect of tumour cells on monocytes as assessed by release of cytokines, ROI and RNI.*

Human monocytes (MO) are heterogeneous population of cells that differ in morphology, phenotype and function (1-5). In particular, the different expression of CD14 (the part of the receptor for lipopolysaccharide) and of CD16 (Fcγ receptor III) was initially used to define two major subsets in peripheral blood, the so called 'classical' CD14⁺⁺ CD16⁻ MO, typically representing up to 90-95% of all MO, and 'non-classical'

CD14⁺CD16⁺⁺ comprising the remaining fraction of MO (6, 7). The CD14⁺CD16⁺⁺ subset is the main producer of tumour necrosis factor (TNF) (8) and is expanded during infection and inflammation, in particular in sepsis (9-11). This subset is also formed during *in vitro* cytokine-induced differentiation from CD14⁺⁺CD16⁻ (12), supporting the earlier suggestion that it may represent a transitory stage of its differentiation (4). CD14⁺CD16⁺⁺ cells constitute the main subpopulation of blood monocytes involved in antitumour response as judged by an enhanced cytotoxicity and production of proinflammatory cytokines (TNF, IL-12) and reactive nitrogen intermediates (RNI) (13). It has been previously suggested that MO and tumour-infiltrating macrophages (TIM) may be affected by tumour cells not only by a direct cell-to-cell contact and soluble factors but also by tumour-derived microvesicles (TMV) (14-16). TMV are small membrane fragments that are released spontaneously by tumour cells during proliferation, migration, activation and apoptosis (16-19). TMV are heterogeneous in shape and size (10 nm - 1 μm) (16, 20). TMV show the expression of several tumour cell determinants such as CD44, CD95L, CD147 (extracellular matrix metalloproteinase inducer, EMMPRIN), CD66 (carcinoembryonal antigen CEA), chemokine receptors (CCR6, CX3CR1) and tumour-associated antigens (Her2/neu) (17, 20-27).

Using an *in vitro* model, MO interactions with TMV released by three tumour cell lines (pancreatic, lung and colorectal carcinomas) have previously been described (16). TMV, as well as tumour cells, are able to activate MO as judged by production of cytokines (TNF, IL-10, IL-12), ROI (28) and chemokines (unpublished). With this in mind, this study compared interactions of CD14⁺⁺CD16⁻ and CD14⁺CD16⁺⁺ MO subsets with TMV in terms of cytokines, ROI and RNI production during *in vitro* culture.

Correspondence to: Monika Baj-Krzyworzeka, Ph.D., Department of Clinical Immunology, Polish-American Institute of Paediatrics, Jagiellonian University Medical College, Wielicka 265 Str., 30-663 Cracow, Poland. Fax: +48 126581756, e-mail: mibaj@cyf-kr.edu.pl

Key words: Tumour-derived microvesicles, CD14⁺⁺CD16⁻, CD14⁺CD16⁺⁺ monocyte subsets.

Materials and Methods

TMV isolation. TMV were obtained as previously described (16). Briefly, human cell lines: HPC-4 (pancreatic adenocarcinoma, TMV_{HPC}) and DeTa (colorectal adenocarcinoma, TMV_{DeTa}) were cultured in RPMI 1640 medium (Sigma, St. Louis, MO, USA) with 5% foetal bovine serum (FBS; PAA Laboratories, Pasching, Germany).

Supernatants from well grown cell cultures were collected and spun down at 2000×g for 20 min to remove cell debris. Then supernatants were again centrifuged (RC28S, Sorvall, Newton, CT, USA) at 50,000×g for 1 hour at 4°C. Pellets were washed several times to remove FBS and finally resuspended in serum-free RPMI-1640 medium. Quantification of TMV proteins was evaluated by the Bradford method (BioRad, Hercules, CA, USA). TMV were tested for endotoxin contamination by the Limmulus test according to manufacturer's instruction (Charles River Laboratories, Inc., Wilmington, MA, USA) and stored at -20°C. TMV_{HPC} were used in all experiments, where TMV_{DeTa} only for RNI testing.

Isolation of MO subpopulation. Human peripheral blood mononuclear cells were isolated from EDTA-blood of healthy donors by the standard Ficoll/Isopaque (Pharmacia, Uppsala, Sweden) density gradient centrifugation. MO were separated from mononuclear cells by counter-flow centrifugal elutriation with the JE-6.B elutriation system equipped with a 5 ml Sanderson separation chamber (Beckman, Palo Alto, CA, USA), as previously described (29). MO were suspended in RPMI-1640 culture medium supplemented with L-glutamine and gentamycin (25 µg/ml) (Sigma). The CD14⁺⁺CD16⁻ and CD14⁺CD16⁺⁺ monocyte subpopulations were isolated from elutriated MO by cell sorting with the use of a FACS Aria cell sorter (BD Biosciences Immunocytometry Systems, San Jose, CA, USA). MO were labelled by using CD14 APC (allophycocyanin) and CD16 PE-Cy7 (phycoerythrin-cyanine 7) conjugated monoclonal antibodies (mAbs; BD Biosciences Pharmingen, San Diego, CA, USA). To exclude natural killer (NK) cells contamination surface expression of HLA-DR antigens was checked for by using peridinin chlorophyll protein complex (PerCP) conjugated mAb (BD Biosciences). Sorted cells (CD14⁺⁺CD16⁻ and CD14⁺CD16⁺⁺) were collected into tubes precoated with FBS to avoid plastic charging and cell attachment to the wall. The purity of sorted cells was checked by flow cytometry and exceeded 95%.

Transfer of TMV to MO subpopulations. TMV were incubated for 5 min with red PKH26 dye (Sigma) according to the manufacturer's instructions. Then TMV were washed with 1% bovine serum albumin and several times in serum-free RPMI-1640 medium. Sorted cells CD14⁺⁺CD16⁻ and CD14⁺CD16⁺⁺ (1×10⁶ cells/ml) were incubated with PKH26-labelled TMV (30 µg/ml) for 18 hours at 37°C in the medium supplemented with 5% FBS. Engulfment of PKH26-labelled TMV by MO subsets was determined by flow cytometry (FACSCanto, BD Bioscience). Red fluorescence intensity and the percentage of positive cells were analysed after quenching extracellular fluorescence with crystal violet as described before (16).

Determination of cytokine secretion. Control MO (elutriated but not sorted) and sorted CD14⁺⁺CD16⁻ and CD14⁺CD16⁺⁺ cells were cultured for 18 hours in 96 well microplates (1×10⁵ cells/well) at 37°C, 5% CO₂ in a humidified atmosphere in the presence of TMV (30 µg/ml). Supernatants were collected and the concentrations of TNF, IL-10 and IL-12p40 were measured by ELISA. The following matched mAbs pairs for ELISA were used (PharMingen, San Diego, CA, USA): for TNF Mab1 (capture) and Mab11 (detection), for IL-10, JES3-9d7 (capture) and JES-12G8 (detection) and for IL-12p40 C8.3 (capture) and C8.6 (detection). Recombinant human cytokines (all from PharMingen) were used as standards. Tests were performed according to the manufacturer's protocol and results were determined with ELISA reader (BioTek Instruments, Winooski, VT,

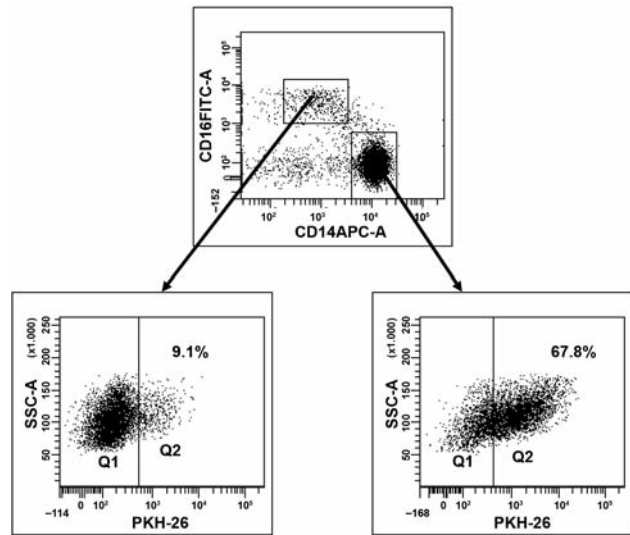


Figure 1. Transfer of PKH26-labelled TMV_{HPC} to MO subsets. Flow cytometry of CD14⁺⁺CD16⁻ (right panel) and CD14⁺CD16⁺⁺ (left panel) cells exposed to PKH26-labelled-TMV_{HPC} for 18 hours followed by quenching of extracellular fluorescence with crystal violet. One representative experiment of four performed is presented.

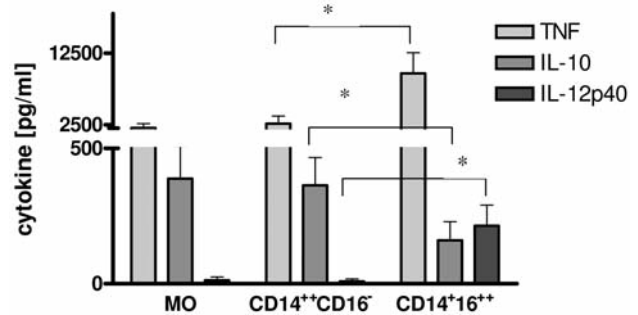


Figure 2. The effect of TMV on cytokine release by MO subpopulations. MO subsets were incubated for 18 hours with TMV_{HPC} (30 µg/ml). Cytokine levels in the culture supernatants were determined by ELISA. Cytokines were not detected in the culture supernatant of control monocytes (medium) or TMV alone. Data represent the mean±SD of six independent experiments. *p<0.05.

USA) at 492 vs. 630 nm wavelength. Detection level for TNF was 20 pg/ml, and 10 pg/ml for IL-10, IL-12p40. The tested cytokines were not detected in TMV.

Determination of ROI production by flow cytometry. The intracellular production of O₂⁻ and H₂O₂ was measured by flow cytometry using oxidation-sensitive fluorescent probes hydroethidine (HE, Sigma) and dihydrorhodamine 123 (DHR123), respectively (30). MO and sorted subsets of MO were incubated at 37°C for 2 hours alone or with TMV (30 µg/ml) in the presence of 10 µM HE and 40 µM DHR123 (both from Sigma). Analysis was performed with FACSCanto cytometer (BD Biosciences).

Nitric oxide secretion. MO and their subpopulations (2×10^5 cells/well) were cultured with TMV_{DeTa} (30 $\mu\text{g}/\text{ml}$) for 18 hours in the presence of fluorescent dye diaminofluorescein-2 (DAF-2). TMV_{DeTa} were chosen because only DeTa tumor cells induce NO in our hands (31). TMV_{HPC} were used as a negative control. NO production was analysed by flow cytometry.

Statistical analysis. Statistical analysis was performed by nonparametric Mann-Whitney test. Differences were considered significant at $p < 0.05$.

Results

Determination of TMV engulfment. It has been previously shown that TMV can adhere to MO surface and this adherence is followed by the engulfment of TMV. The present study investigated whether engulfment of TMV was similar for both subsets ($\text{CD}14^{++}\text{CD}16^{-}$ and $\text{CD}14^{+}\text{CD}16^{++}$) of MO. The MO subsets were incubated with PKH26-labelled TMV for 18 hours. Data showed that after an overnight incubation TMV were located intracellularly, mainly in $\text{CD}14^{++}\text{CD}16^{-}$ cells. Only a small percentage of $\text{CD}14^{+}\text{CD}16^{++}$ cells showed red fluorescence inside (Figure 1). No differences in TMV attachment to monocyte subsets were observed (data not shown).

Cytokine secretion. Previous studies have shown that TMV, as well as tumour cells, stimulate production of TNF, IL-10, IL-12 by MO (28, 32). The experiments in this study were undertaken to determine cytokine secretion by the subpopulations of MO stimulated with TMV. Figure 2 shows that the whole population of MO and $\text{CD}14^{++}\text{CD}16^{-}$ cells after stimulation with TMV secreted comparable amounts of TNF, IL-10 and IL-12p40. Secretion of TNF and IL-12p40 by $\text{CD}14^{+}\text{CD}16^{++}$ cells was significantly higher in comparison to initial MO or $\text{CD}14^{++}\text{CD}16^{-}$ cells. In contrast, secretion of IL-10 by $\text{CD}14^{+}\text{CD}16^{++}$ cells was significantly lower than by MO and $\text{CD}14^{++}\text{CD}16^{-}$. Neither TMV alone or control monocytes released measurable amounts of tested cytokines (data not shown).

Production of ROI. Tumour cells and TMV are able to induce ROI production by MO (28, 32). As tumour cells induce ROI production mainly by $\text{CD}14^{++}\text{CD}16^{-}$ cells (13), this study examined whether this subpopulation is the main producer of ROI after TMV stimulation. Initial MO and their subsets were stimulated for 2 hours with TMV and production of H_2O_2 and O_2^{-} was measured by flow cytometry. Figure 3 shows that ROI production by MO and $\text{CD}14^{++}\text{CD}16^{-}$ cells was comparable and significantly higher than by $\text{CD}14^{+}\text{CD}16^{++}$ cells.

Production of RNI. Production of RNI (NO) was assessed by intracellular staining with DAF-2 in MO and their subsets after 18 h stimulation with TMV_{DeTa}. A

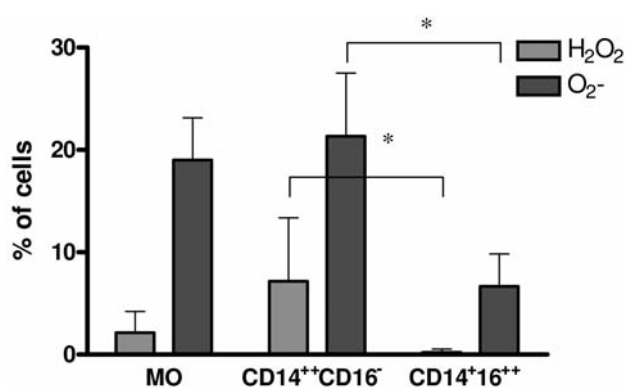


Figure 3. The effect of TMV on intracellular production of O_2^{-} and H_2O_2 by MO subpopulations. The level of O_2^{-} and H_2O_2 production was determined by flow cytometry using oxidation-sensitive probes HE and DHR123, respectively. MO subsets were incubated alone or with TMV (30 $\mu\text{g}/\text{ml}$) in the presence of HE or DHR123 for 2 hours. Data represent mean \pm SD of five independent experiments; $*p < 0.05$.

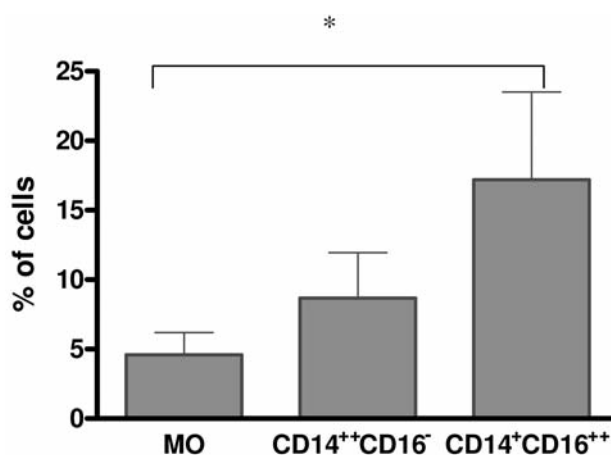


Figure 4. The effect of TMV on production of NO by MO subpopulations. The level of NO was determined by flow cytometry using DAF-2 probe. MO subsets were incubated alone or with TMV (30 $\mu\text{g}/\text{ml}$) in the presence of DAF-2 for 18 h. Data represent mean \pm SD of six independent experiments; $*p < 0.05$.

significantly higher percentage of DAF-2 positive cells was found among $\text{CD}14^{+}\text{CD}16^{++}$ cells in comparison to $\text{CD}14^{++}\text{CD}16^{-}$ cells (Figure 4), suggesting that the former are main producers of NO.

Discussion

The present study showed that subpopulations ($\text{CD}14^{++}\text{CD}16^{-}$, $\text{CD}14^{+}\text{CD}16^{++}$) of MO interact with TMV in different manners. First, there were differences in TMV engulfment by MO subsets, as $\text{CD}14^{++}\text{CD}16^{-}$ internalized more TMV than $\text{CD}14^{+}\text{CD}16^{++}$ cells. Second, $\text{CD}14^{+}\text{CD}16^{++}$ cells were the main subpopulation of MO, which, when

stimulated with TMV, produce pro-inflammatory cytokines (TNF, IL-12) and RNI. In contrast, CD14⁺⁺CD16⁻ cells exposed to TMV released more IL-10 and ROI, but less TNF and IL-12p40.

MO and macrophages play a dual role in the host's response to the growing tumour as they both enhance or inhibit proliferation of malignant cells (14). The final outcome of MO effect may depend on the production of various mediators including cytokines, growth factors, proangiogenic and angiostatic factors, *etc.* On the other hand, tumour cells may affect MO by direct cell-to-cell contact, *via* soluble factors or by TMV (14, 28, 33, 34). Contact of MO with TMV results in cytokine (TNF, IL-10, IL-12) and ROI production with the pattern similar to tumour cell stimulation (28, 32, 35).

Since the response of MO subsets to tumour cells is different, it was investigated whether MO subsets interact with TMV in a pattern similar to tumour cells. CD14⁺⁺CD16⁻ cells are characterised by a high phagocytic activity and generation of ROI (13, 36). This is in keeping with the current observations that after TMV stimulation CD14⁺⁺CD16⁻ cells release less TNF and IL-12 and show enhanced ROI production (H₂O₂ and O₂) in comparison to the CD14⁺CD16⁺⁺ subset. These data were supported by analysis of TMV engulfment by subpopulation of MO. Approximately 60% of CD14⁺⁺CD16⁻ showed PKH26-labelled TMV red fluorescence not quenched by crystal violet, which indicates intracellular localization of TMV. Strong engulfment of TMV by CD14⁺⁺CD16⁻ cells, known as precursors of professional phagocytes, may suggest the role of phagocytosis/receptor mechanism in TMV internalization. On the other hand, CD14⁺CD16⁺⁺, which are rather poor phagocytes, expressed only 10% of cells with intracellular red fluorescence after incubation with PKH26 labelled-TMV. CD14⁺CD16⁺⁺ cells represent only 5-10% of total human MO (37), and showed an increased release of TNF, IL-12 and RNI after lipopolysaccharide or tumour cell stimulation, in comparison to CD14⁺⁺CD16⁻ cells (4, 7, 13, 36). Also stimulation with TMV induces significantly higher secretion of proinflammatory cytokines (TNF, IL-12p40) by CD14⁺CD16⁺⁺ than CD14⁺⁺CD16⁻ cells. This is in concordance with previous data suggesting that CD14⁺CD16⁺⁺ cells are the main subpopulation of MO involved in antitumour response as judged by cytotoxicity and production of proinflammatory cytokines (13). In addition, it has previously been shown that HLA-DR is involved in signalling for TNF production by monocytes stimulated with tumour cells (38). This may be relevant also in the present study, as an increased expression of HLA-DR is observed in the CD14⁺CD16⁺⁺ subpopulation. TMV, which are present in culture supernatant may possibly induce NO production in monocytes *via* CD29 or CD44 molecules, which are expressed on MO. The current results clearly showed that TMV may mimic tumour cell effect on MO subsets. The precise mechanism of interactions of

TMV with MO subset is not clear, but ligand-receptor binding should be taken into consideration as TMV may carry several antigens presented on tumour cells (16, 20). This hypothesis was partially proven, as blocking CD44 molecules on MO was sufficient to diminish production of TNF after TMV stimulation (28).

In summary, the exact activity of human MO in malignancy remains not fully understood, but the data presented here increase the knowledge about MO–tumour cell interactions, highlighting the role of TMV in monocyte-mediated antitumour response.

Acknowledgements

This study was supported by the Jagiellonian University Medical College (grant no. K/ZDS/001481). The authors thank Ms B. Hajto and I. Ruggiero for skilful technical assistance.

References

- Norris DA, Morris RM, Sanderson RJ and Kohler PF: Isolation of functional subsets of human peripheral blood monocytes. *J Immunol* 123: 166-172, 1979.
- Zembala M, Uracz W, Ruggiero I, Mytar B and Pryjma J: Isolation and functional characteristic of FcR⁺ and FcR⁻ human monocyte subsets. *J Immunol* 133: 1293-1299, 1984.
- Wang SY, Mak KL, Chen LY, Chou MP and Ho CK: Heterogeneity of human blood monocytes: two subpopulations with different sizes, phenotypes and functions. *Immunol* 77: 298-303, 1992.
- Ziegler-Heitbrock HW: Heterogeneity of human blood monocytes: the CD14⁺/CD16⁺ subpopulation. *Immunol Today* 17: 424-428, 1996.
- Grage-Griebenow E, Flad H-D and Ernst M: Heterogeneity of human peripheral blood monocyte subsets. *J Leukoc Biol* 69: 11-20, 2001.
- Passlick B, Flieger D and Ziegler-Heitbrock HW: Identification and characterization of novel monocyte subpopulation in human peripheral blood. *Blood* 74: 2527-2534, 1989.
- Ziegler-Heitbrock HW, Fingerle G, Strobel M, Schraut W, Stelter F, Schutt C, Passlick B and Pforte A: The novel subset of CD14⁺/CD16⁺ blood monocytes exhibits features of tissue macrophages. *Eur J Immunol* 23: 2053-2058, 1993.
- Belge KU, Dayyani F, Horelt A, Siedlar Frankenberger B, Espevik T and Ziegler-Heitbrock L: The proinflammatory CD14⁺CD16⁺ DR⁺⁺ monocytes are a major source of TNF. *J Immunol* 168: 3536-3542, 2002.
- Fingerle G, Pforte A, Passlick B, Blumenstein M, Strobel M and Ziegler-Heitbrock HW: The novel subset of CD14⁺/CD16⁺ blood monocytes is expanded in sepsis patients. *Blood* 82: 3170-3176, 1993.
- Nockher WA and Scherrberich JE: Expanded CD14⁺CD16⁺ monocyte subpopulation in patients with acute and chronic infections undergoing hemodialysis. *Infect Immun* 66: 2782-2790, 1998.
- Skrzeczynska J, Kobylarz K, Hartwich Z, Zembala M and Pryjma J: CD14⁺CD16⁺ monocytes in the course of sepsis in neonates and small children: monitoring and functional studies. *Scan J Immunol* 55: 629-638, 2002.

- 12 Skinner NA, Maclsaac CM, Hamilton JA and Visvanathan K: Regulation of Toll-like receptor (TLR) 2 and TLR4 on CD14^{dim}CD16⁺ monocytes in response to sepsis related antigens. *Clin Exp Immunol* 141: 270-278, 2005.
- 13 Szaflarska A, Baj-Krzyworzeka M, Siedlar M, Weglarczyk K, Ruggiero I, Hajto B and Zembala M: Antitumor response of CD14⁺/CD16⁺ monocyte subpopulation. *Exp Haematol* 32: 748-755, 2004.
- 14 Mantovani A, Sozzani S, Locati M, Allavena P and Sica A: Macrophage polarization: tumor-associated macrophages as a paradigm for polarized M2 mononuclear phagocytes. *Trends Immunol* 23: 549-55, 2002.
- 15 Mantovani A, Sica A, Sozzani S, Allavena P, Vecchi A and Locati M: The chemokine system in diverse forms of macrophage activation and polarization. *Trends Immunol* 25: 677-686, 2004.
- 16 Baj-Krzyworzeka M, Szatanek R, Weglarczyk K, Baran J, Urbanowicz B, Branski P, Ratajczak MZ and Zembala M: Tumour-derived microvesicles carry several surface determinants and mRNA of tumour cells and transfer some of these determinants to monocytes. *Cancer Immunol Immunother* 55: 808-818, 2006.
- 17 Friedl P, Maaser K, Klein CE, Niggemann B, Krohne G and Zanker KS: Migration of highly aggressive MV3 melanoma cells in 3-dimensional collagen lattices results in local matrix reorganization and shedding of alpha2 and beta1 integrins and CD44. *Cancer Res* 57: 2061-2070, 1997.
- 18 Ginestra A, Miceli D, Dolo V, Romano FM and Vittorelli ML: Membrane vesicles in ovarian cancer fluids: a new potential marker. *Anticancer Res* 19: 3439-3445, 1999.
- 19 Poste G and Nicolson GL: Arrest and metastasis of blood-borne tumor cells are modified by fusion of plasma membrane vesicles from highly metastatic cells. *Proc Natl Acad Sci USA* 77: 399-403, 1980.
- 20 Baran J, Baj-Krzyworzeka M, Weglarczyk K, Szatanek R, Zembala M, Barbasz J, Czupryna A, Szczepanik A and Zembala M: Circulating tumour-derived microvesicles in plasma of gastric cancer patients. *Cancer Immunol Immunother* 59: 841-850, 2010.
- 21 Dolo V, Adobati E, Canevari S, Picone MA and Vittorelli ML: Membrane vesicles shed into the extracellular medium by human breast carcinoma cells carry tumor-associated surface antigens. *Clin Exp Metastasis* 13: 277-286, 1995.
- 22 Dolo V, Ginestra A, Cassara D, Violini S, Lucania G, Torrisi MR, Nagase H, Canevari S, Pavan A and Vittorelli ML: Selective localization of matrix metalloproteinase 9, beta1 integrins, and human lymphocyte antigen class I molecules on membrane vesicles shed by 8701-BC breast carcinoma cells. *Cancer Res* 58: 4468-4474, 1998.
- 23 Mayer C, Maaser K, Daryab N, Zanker KS, Bocker EB and Friedl P: Release of cell fragments by invading melanoma cells. *Eur J Cell Biol* 83: 709-715, 2004.
- 24 Sidhu SS, Mengistab AT, Tauscher AN, LaVail J and Basbaum C: The microvesicle as a vehicle for EMMPRIN in tumour-stromal interactions. *Oncogene* 29: 956-963, 2004.
- 25 Taylor DD and Black PH: Shedding of plasma membrane fragments. Neoplastic and developmental importance. *Dev Biol* (NY 1985) 3: 33-57, 1986.
- 26 Taylor DD and Gercel-Taylor C: Tumour-derived exosomes and their role in cancer-associated T-cell signaling defects. *Br J Cancer* 92: 305-311, 2005.
- 27 Iero M, Valenti R, Huber V, Filipazzi P, Parmiani G, Fais S and Rivoltini L: Tumour-released exosomes and their implications in cancer immunity. *Cell Death Differ* 15: 80-88, 2008.
- 28 Baj-Krzyworzeka M, Szatanek R, Weglarczyk K, Baran J and Zembala M: Tumour-derived microvesicles modulate biological activity of human monocytes. *Immunol Lett* 113: 76-82, 2007.
- 29 Baran J, Guzik K, Hryniewicz W, Ernst M, Flad H-D and Pryjma J: Apoptosis of monocytes and prolonged survival of granulocytes as a result of phagocytosis of bacteria. *Infect Immun* 64: 4242-4246, 1996.
- 30 Baran J, Weglarczyk K, Mysiak M, Guzik K, Ernst M, Flad H-D and Pryjma J: Fas (CD95)-FasL (CD95L) interactions are responsible for monocyte apoptosis occurring as a result of phagocytosis and killing of *Staphylococcus aureus*. *Infect Immun* 69: 1287-1291, 2001.
- 31 Siedlar M, Mytar B, Krzeszowiak A, Baran J, Hyszko M, Ruggiero I, Wieckiewicz J, Stachura J and Zembala M: Demonstration of *iNOS* mRNA in human monocytes stimulated with cancer cells *in vitro*. *J Leukoc Biol* 65: 597-604, 1999.
- 32 Mytar B, Siedlar M, Woloszyn M, Ruggiero I, Pryjma J and Zembala M: Induction of reactive oxygen intermediates in human monocytes by tumour cells and their role in spontaneous monocyte cytotoxicity. *Br J Cancer* 79: 737-743, 1999.
- 33 Siedlar M, Marcinkiewicz J and Zembala M: MHC class I and class II determinants and some adhesion molecules are engaged in the regulation of nitric oxide production *in vitro* by human monocytes stimulated with colon carcinoma cells. *Clin Immunol Immunopathol* 77: 380-384, 1995.
- 34 Mytar B, Siedlar M, Woloszyn M, Colizzi V and Zembala M: Cross-talk between human monocytes and cancer cells during reactive oxygen intermediates generation: the essential role of hyaluronan. *Int J Cancer* 94: 727-732, 2001.
- 35 Mytar B, Woloszyn M, Szatanek R, Baj-Krzyworzeka M, Siedlar M, Ruggiero I, Wieckiewicz J and Zembala M: Tumor cell-induced deactivation of human monocytes. *J Leukoc Biol* 74: 1094-1101, 2003.
- 36 Grage-Griebienow E, Flad HD, Ernst M, Bzowska M, Skrzeczynska J and Pryjma J: Human MO subsets as defined by expression of CD64 and CD16 differ in phagocytic activity and generation of oxygen intermediates. *Immunobiology* 202: 42-50, 2000.
- 37 Weber C, Belge KU, von Hundelshausen P, Draude G, Steppich B, Mack M, Frankenberger M, Weber KS and Ziegler-Heitbrock HW: Differential chemokine receptor expression and function in human subpopulations. *J Leukoc Biol* 67: 699-704, 2000.
- 38 Zembala M, Siedlar M, Ruggiero I, Wieckiewicz J, Mytar B, Mattei M and Colizzi V: The MHC class II and CD44 molecules are involved in the induction of tumour necrosis factor (TNF) gene expression by human monocytes stimulated with tumour cells. *Int J Cancer* 56: 269-274, 1994.

Received May 31, 2010

Revised June 21, 2010

Accepted June 25, 2010